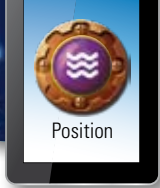


Position



1 Draw the cake they choose.

Mandy	Mitch	Milly	Min	Mark
top row, on the left	bottom row, 2nd from the right	middle row, on the right	bottom row, on the left	top row, in the middle

2 Write the position of:

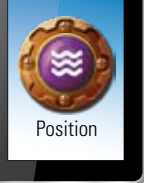
- a the cupcake with the cherry on top. _____
- b the meringue snowman. _____
- c the cream frog. _____
- d the apricot cheesecake. _____
- e the strawberry slice. _____

3 Write the names and positions of the three cakes you like best.

- a _____
- b _____
- c _____

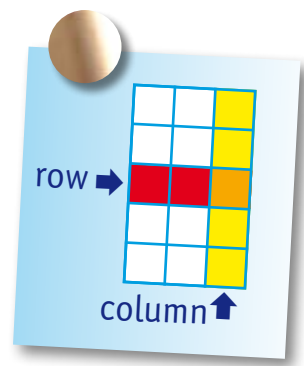


Rows and columns



- 1 Which letter is:
- a third column, top row? _____
 - b last column, first row? _____
 - c fifth column, second row? _____
 - d second last column, third row from the bottom? _____
 - e third column from the right, fourth row from the top? _____
 - f These letters spell a word. What is the word? _____

5	U	P	G	A	D	C
4	D	S	K	V	E	B
3	F	B	Y	O	A	N
2	G	R	O	T	E	F
1	H	I	L	N	M	R
	1	2	3	4	5	6



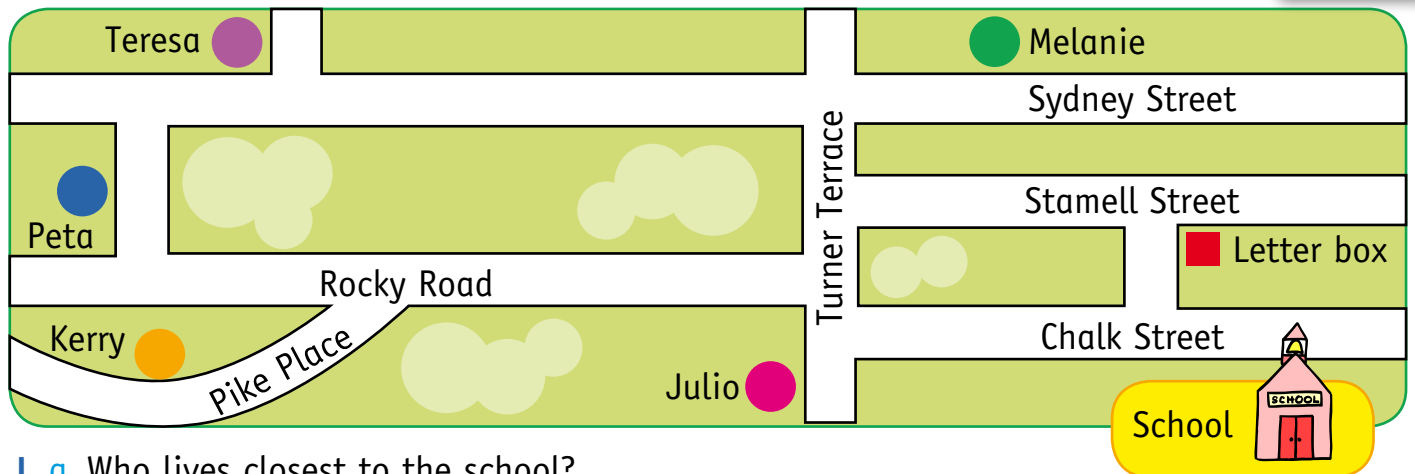
2 Here is the map of 3B's classroom.

Tim	Simon	Kirsty	Zoe
Lionel	Bob	Adam	
	Chris	Brian	Amy
Lucy	Sam	Jim	Judith
		Samad	
		Chloe	Gill
		Samir	Lilly
		Joe	Ajit
			Lenny
			Gopal
			Leah
		Miss Brown	

- a How many children are in Miss Brown's class? _____
- b Who is sitting next to Brian? _____
- c Who is sitting in front of the teacher? _____
- d Who is sitting behind Lionel? _____
- e How many children are in Chloe's row? _____
- f Rodger wants to sit in the third row. Who will he sit next to? _____
- g Joe was talking. He was sent to sit behind Kirsty. Mark his new seat on the map.
- h Draw in red how Joe would get to his new seat.
- i Lucy wanted to borrow a pencil. She walked across the front of the room and down the aisle between Ajit and Leah. She asked the person in the third row on her left. Who did she ask? _____
- j Write directions for the path Adam would take to sit next to Samad.

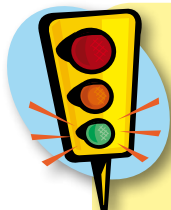


Street map



- 1
 - a Who lives closest to the school? _____
 - b On which street does Melanie live? _____
 - c Who lives at the corner of two streets? _____
 - d Peta went to visit her friend. She walked out her front gate, turned left, then turned right. She walked past Turner Terrace, and entered a house on her left. Who did she visit? _____
 - e Draw the path she followed in red.
 - f Who lives furthest from Julio? _____
- 2 Teresa's mum asked her to post a letter on her way to school. In green draw her path to school.
- 3 Write directions to tell how Kerry walks home from school.

- 4 George has just moved into the area. He lives on the corner of Turner Terrace and Stamell Street closest to the school. Label the map to show where George lives.

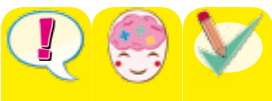


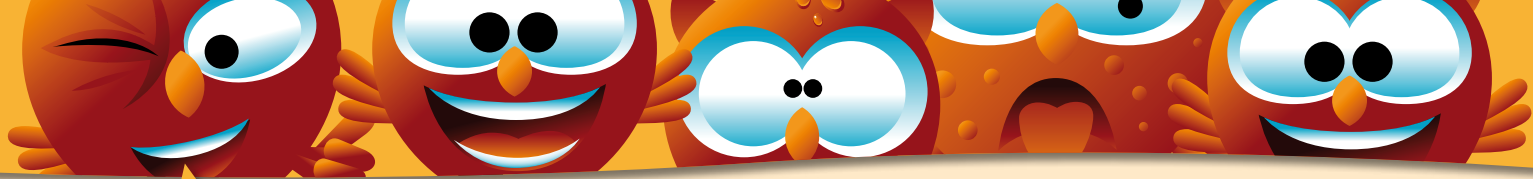
Challenge! Find the hidden message.

a b c d e f g h i j k

- | | |
|-------------------|-------------------|
| a Column 1, row 2 | f Column 2, row 1 |
| b Column 4, row 6 | g Column 6, row 1 |
| c Column 5, row 3 | h Column 6, row 7 |
| d Column 2, row 6 | i Column 3, row 8 |
| e Column 3, row 3 | j Column 4, row 4 |
| | k Column 1, row 5 |

W	T	C	Y	U	I
A	R	E	P	O	A
S	N	D	O	F	G
S	D	F	J	X	H
C	V	B	E	N	K
A	N	G	M	I	L
G	E	R	D	B	Y
S	P	F	H	I	L






Problem solving

Make a Picture Map

You and your friends are going on a mission to find lost gold.

7							
6	N ↑						
5							
4							
3							
2							
1		HOME					
	A	B	C	D	E	F	G

- Put these things on the map: mountains in the middle, a river to cross, swamps and a forest.
- Write some directions for how you are going to get there. Use coordinates to describe your movements. Remember to put the letter first, eg B4.

