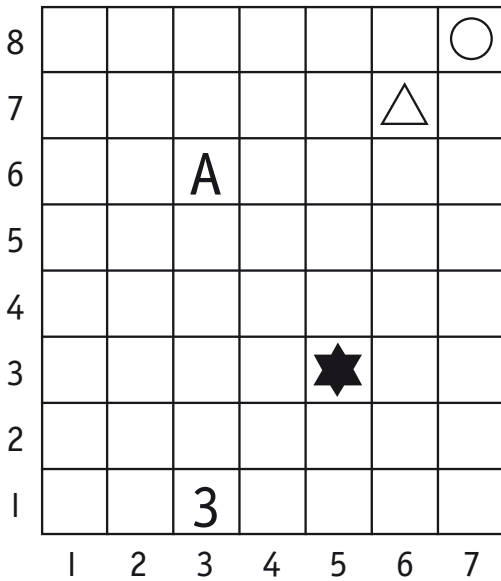


# Position



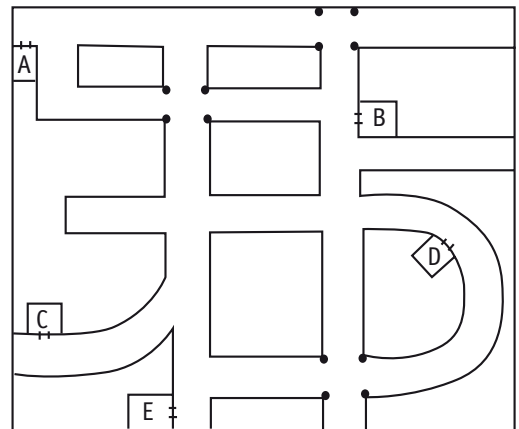
- 1
  - a Colour the square at row 4 column 5 red.
  - b Put a cross 2 squares under the star.
  - c Place a dot directly above A.
  - d Colour the last square in row 5 green.
  - e Draw a sun 3 squares to the left of the star.

2 Write the position of:

- a the star. \_\_\_\_\_
- b A. \_\_\_\_\_
- c the triangle. \_\_\_\_\_
- d the circle. \_\_\_\_\_



- 3
  - a Use red to draw the shortest path from A to B.
  - b Use green to draw the shortest path from C to D.
  - c Use blue to draw the shortest path from B to E.
  - d I am at E. I leave my house, turn left, walk to the end of the street, turn left again and cross one more street to visit my friend. Who is my friend? \_\_\_\_\_



4 Where are we going?

\_\_\_\_\_ a    \_\_\_\_\_ b    \_\_\_\_\_ c    \_\_\_\_\_ d    \_\_\_\_\_ e  
 \_\_\_\_\_ f    \_\_\_\_\_ g    \_\_\_\_\_ h    \_\_\_\_\_ i    \_\_\_\_\_ j    \_\_\_\_\_ k

- |         |                |   |                |
|---------|----------------|---|----------------|
| a and c | column 2 row 6 | g | column 3 row 3 |
| b       | column 4 row 4 | h | column 5 row 1 |
| d       | column 3 row 2 | j | column 2 row 4 |
| e       | column 5 row 6 | k | column 4 row 3 |
| f and i | column 1 row 5 |   |                |

6	N	T	J	F	E
5	C	H	B	U	P
4	Q	U	Y	O	M
3	G	V	I	S	D
2	W	Z	H	K	X
1	A	C	T	L	R
	1	2	3	4	5

**Self Assessment** 😊 😊 😊

ACMMG065 Location and transformation • Create and interpret simple grid maps to show position and pathways.	Score	Basic	Sound	High
---	-------	-------	-------	------