

AUSTRALIAN CAPITAL CITY

FACT FILE | ADELAIDE



Size and Location

Adelaide is the capital city of South Australia. It is located on the south coast of the state. Adelaide covers an area of over 3000 square kilometres.



Natural Landscape

Adelaide is located on the Saint Vincent Gulf. There are many coastal beaches in Adelaide including Henley Beach, Aldinga Beach and Glenelg Beach. Adelaide is a flat area. The Mount Lofty Ranges lie to the east of the city. The River Torrens (also known as Karrawirra Parri) runs through the Adelaide area.



Public Transport

Adelaide has a comprehensive public transport network of trains, trams, buses and taxis which make it easy to see the sites of the city.



Population

Adelaide has a population of over 1.3 million people.



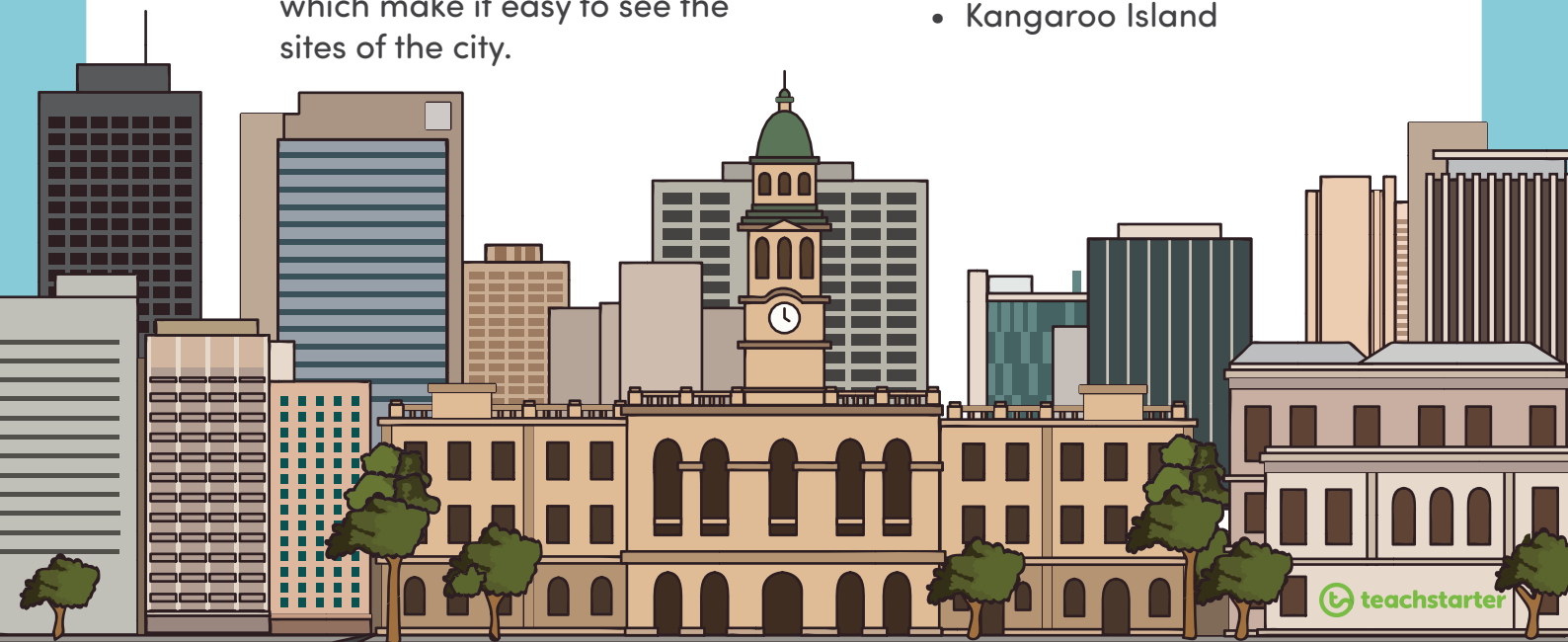
Climate and Weather

Adelaide has a Mediterranean climate. This means that summer lasts longer than winter. Adelaide experiences hot, dry summers and cool, wet winters. The wettest month in Adelaide is June and the driest month is February.



Places to See and Visit

- Glenelg Beach
- Adelaide Oval
- Fisherman's Wharf
- South Australia Museum
- Adelaide Botanic Gardens
- Rundle Mall
- Cleland Wildlife Park
- Mega Adventure Park
- Adelaide Zoo
- Kangaroo Island



AUSTRALIAN CAPITAL CITY

FACT FILE | PERTH



Size and Location

Perth is the capital city of Western Australia. It is located on the west coast of the state. Perth covers an area of over 6000 square kilometres.



Natural Landscape

Perth is located on the coast of the Indian Ocean. There are many coastal beaches in Perth including Cottesloe Beach, Scarborough Beach and City Beach. Perth is a flat area. The Darling Ranges lie to the east of the city. The Swan River runs through the Perth area.



Public Transport

Perth has a comprehensive public transport network of trains, buses, ferries and taxis which make it easy to see the sites of the city.



Population

Perth has a population of over 2 million people.



Climate and Weather

Perth has a Mediterranean climate. This means that summer lasts longer than winter. Perth experiences hot, dry summers and cool, wet winters. The wettest month in Perth is June and the driest month is December.



Places to See and Visit

- The Bell Tower
- Rottnest Island
- Fremantle Markets
- Art Gallery of Western Australia
- Kings Park
- Adventure World
- Yanchep National Park
- Perth Mint
- Perth Zoo
- Penguin Island



AUSTRALIAN CAPITAL CITY

FACT FILE | HOBART



Size and Location

Hobart is the capital city of Tasmania. It is located on the east coast of the state. Hobart covers an area of over 1500 square kilometres.



Natural Landscape

Hobart is located within the foothills of Mount Wellington, on the banks of the Derwent River. There are many beaches in Hobart including Nutgrove Beach, Long Beach and Short Beach. Hobart has some flat areas and some hilly areas.



Public Transport

Buses and taxis are the only forms of public transport in Hobart.



Population

Hobart has a population of over 200 000 people.



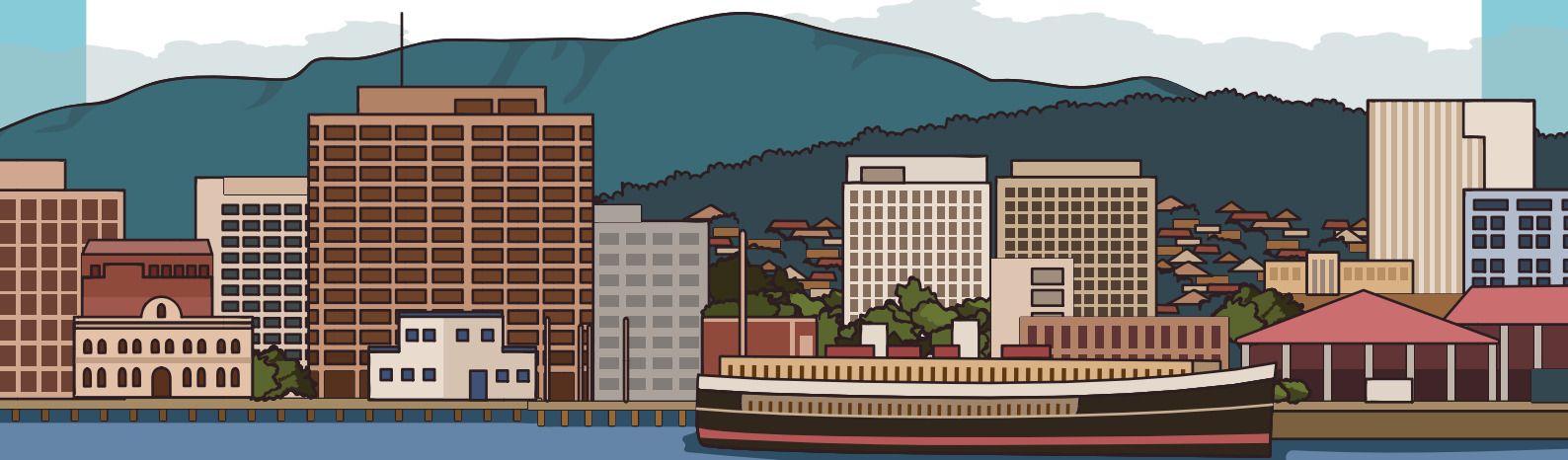
Climate and Weather

Hobart has a temperate climate. During the summer months, Hobart enjoys temperatures around 20 degrees Celsius. During the winter months, the temperature drops to around 10 degrees Celsius. The wettest month in Hobart is December and the driest month is June.



Places to See and Visit

- Mount Wellington
- Old Hobart Gaol
- Salamanca Market
- Tasmanian Museum
- Royal Botanical Gardens
- State Cinema
- Port Arthur
- Strickland Falls
- Bonorong Sanctuary
- Bruny Island



AUSTRALIAN CAPITAL CITY

FACT FILE | BRISBANE



Size and Location

Brisbane is the capital city of Queensland. It is located on the east coast of the state. Brisbane covers an area of over 15 000 square kilometres.



Natural Landscape

Brisbane is located on Moreton Bay. There are many bayside areas in Brisbane including Brighton, Nudgee and Manly. Brisbane is a hilly area. The Great Dividing Range lies to the west of the city. The Brisbane River runs through the Brisbane area.



Public Transport

Brisbane has a comprehensive public transport network of trains, buses, ferries, bikes and taxis which make it easy to see the sites of the city.



Population

Brisbane has a population of over 2.3 million people.



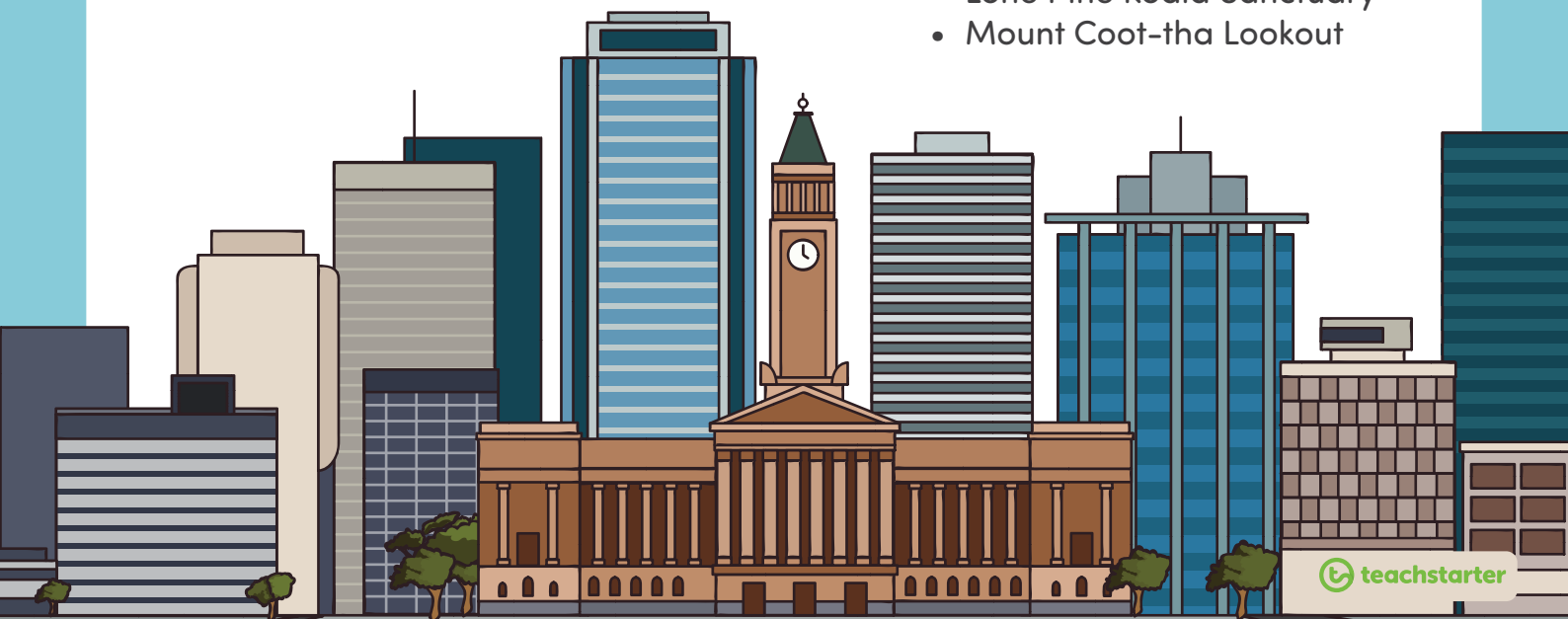
Climate and Weather

Brisbane has a subtropical climate. This means that temperatures do not vary greatly throughout the year. Brisbane experiences hot, humid summers and warm, dry winters. The wettest month in Brisbane is February and the driest month is August.



Places to See and Visit

- Story Bridge
- Wheel of Brisbane
- South Bank Parklands
- Queensland Museum
- Roma Street Parklands
- Gold Coast Theme Parks
- Glass House Mountains
- Queen Street Mall
- Lone Pine Koala Sanctuary
- Mount Coot-tha Lookout



AUSTRALIAN CAPITAL CITY

FACT FILE | CANBERRA



Size and Location

Canberra is the capital city of Australia. It is located in the Australian Capital Territory. Canberra covers an area of around 800 square kilometres.



Natural Landscape

Canberra is located within the foothills of the Brindabella Ranges. It has an elevation of 580 metres above sea level. Some of the surrounding hills include Mount Majura, Mount Taylor and Mount Ainslie. There is an artificial (man-made) lake in the centre of Canberra called Lake Burley Griffin.



Public Transport

Buses and taxis are the only forms of public transport in Canberra.



Population

Canberra has a population of over 400 000 people.



Climate and Weather

Canberra has a temperate climate. During the summer months, Canberra enjoys temperatures around 25 degrees Celsius. During the winter months, the temperature drops to around 10 degrees Celsius. The wettest month in Canberra is October and the driest month is June.



Places to See and Visit

- Mount Ainslie Lookout
- Parliament House
- Australian Institute of Sport
- National Museum of Australia
- Lake Burley Griffin
- Australian War Memorial
- Questacon
- Royal Australian Mint
- National Zoo and Aquarium
- Telstra Tower



AUSTRALIAN CAPITAL CITY

FACT FILE | DARWIN



Size and Location

Darwin is the capital city of the Northern Territory. It is located on the north coast of the territory. Darwin covers an area of over 3000 square kilometres.



Natural Landscape

Darwin is located on Darwin Harbour, on the coast of the Timor Sea. The city is bordered by Frances Bay to the east and Cullen Bay to the west. Most of the Darwin area is flat and low-lying.



Public Transport

Buses and taxis are the only forms of public transport in Darwin.



Population

Darwin has a population of over 100 000 people.



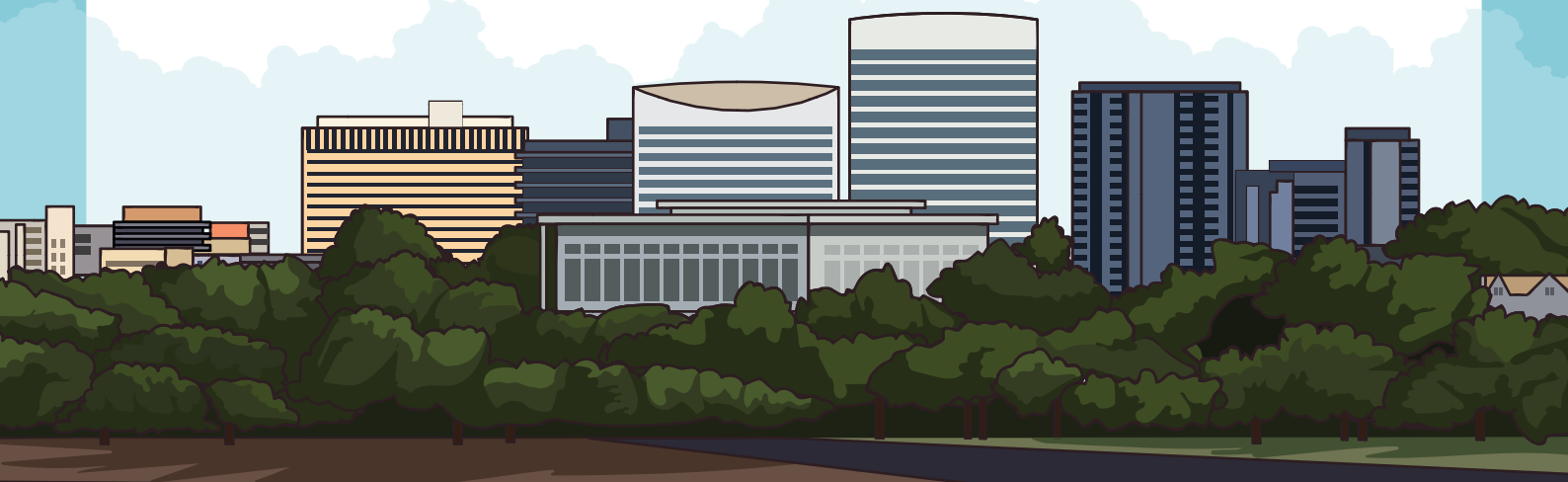
Climate and Weather

Darwin has a tropical climate. It has a wet season (November to April) and a dry season (May to October). During the wet season, Darwin experiences high humidity, monsoon rains and storms. During the dry season, Darwin experiences warm sunny days and cool nights.



Places to See and Visit

- Bicentennial Park
- Crocosaurus Cove
- Crocodylus Park
- Territory Wildlife Park
- Mary River Wetlands
- Darwin Harbour
- Mindil Beach Market
- Museum of the Northern Territory
- Charles Darwin National Park
- East Point Reserve



AUSTRALIAN CAPITAL CITY

FACT FILE | MELBOURNE



Size and Location

Melbourne is the capital city of Victoria. It is located on the south coast of the state. Melbourne covers an area of over 9000 square kilometres.



Natural Landscape

Melbourne is located on Port Phillip Bay. There are many bayside beaches in Melbourne, including the famous St Kilda Beach. Melbourne is a flat area. The Dandenong Ranges lie to the east of the city. The Yarra River runs through the Melbourne area.



Public Transport

Melbourne has a comprehensive public transport network of trams, trains, buses, bikes and taxis which make it easy to see the sites of the city.



Population

Melbourne has a population of over 4.7 million people.



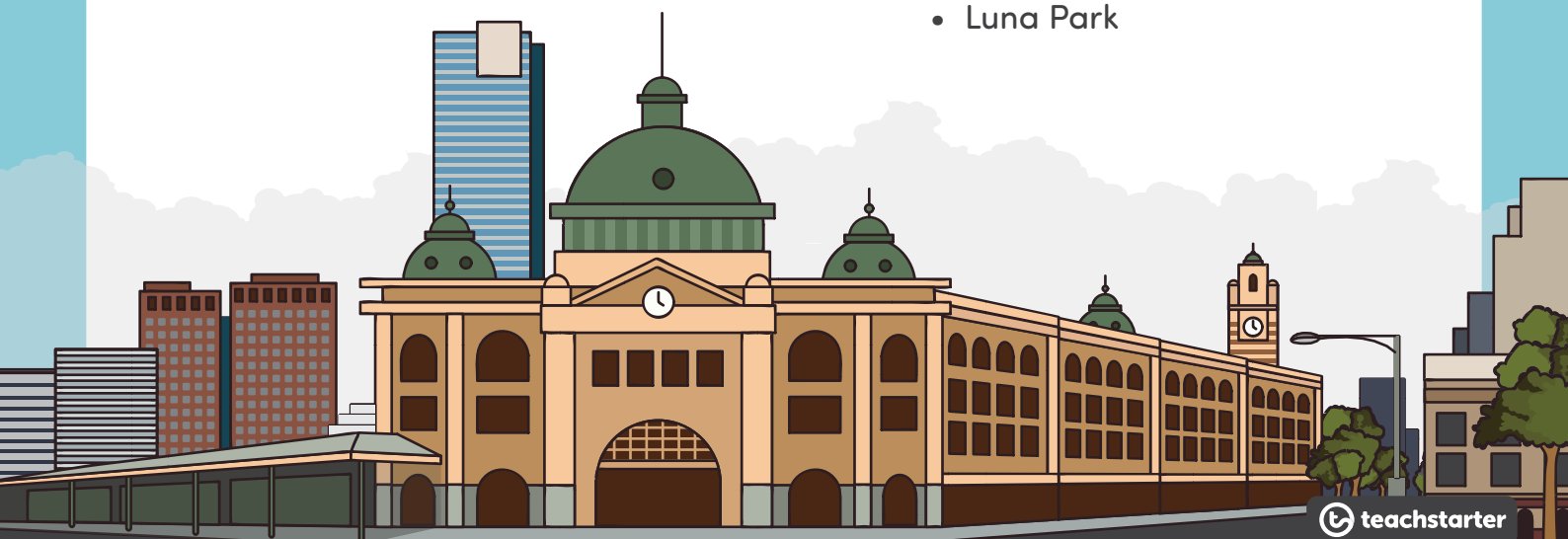
Climate and Weather

Melbourne has a temperate climate. During the summer months, Melbourne enjoys temperatures around 25 degrees Celsius. During the winter months, the temperature drops to around 15 degrees Celsius. The wettest month in Melbourne is October and the driest month is January.



Places to See and Visit

- Melbourne Cricket Ground
- Melbourne Star
- Queen Victoria Markets
- St Kilda Pier
- Royal Botanic Gardens
- Dandenong Ranges
- Melbourne Zoo
- Block Arcade
- Puffing Billy Railway
- Luna Park



AUSTRALIAN CAPITAL CITY

FACT FILE | SYDNEY



Size and Location

Sydney is the capital city of New South Wales. It is located on the east coast of the state. Sydney covers an area of 12 000 square kilometres.



Natural Landscape

Sydney is located on Port Jackson (also known as Sydney Harbour). There are many coastal beaches in Sydney, including the famous Bondi Beach. Sydney is a reasonably flat area. The Blue Mountains lie to the west of the city, which are part of the Great Dividing Range. The Parramatta River runs through the Sydney area.



Public Transport

Sydney has a comprehensive public transport network of trains, buses, ferries and taxis which make it easy to see the sites of the city.



Population

Sydney has a population of over 5 million people.



Climate and Weather

Sydney has a subtropical climate. During the summer months, Sydney enjoys temperatures around 30 degrees Celsius. During the winter months, the temperature drops to around 20 degrees Celsius. The wettest month in Sydney is June and the driest month is September.



Places to See and Visit

- Sydney Opera House
- Sydney Harbour Bridge
- The Rocks
- Bondi Beach
- Royal Botanic Gardens
- Blue Mountains
- Taronga Zoo
- Darling Harbour
- Sydney Tower
- Luna Park

