

# TYRANNOSAURUS REX

Tyrannosaurus Rex (also known as T-Rex) was one of the largest dinosaurs that ever walked the earth. It lived around 66 million years ago in an area now known as North America.

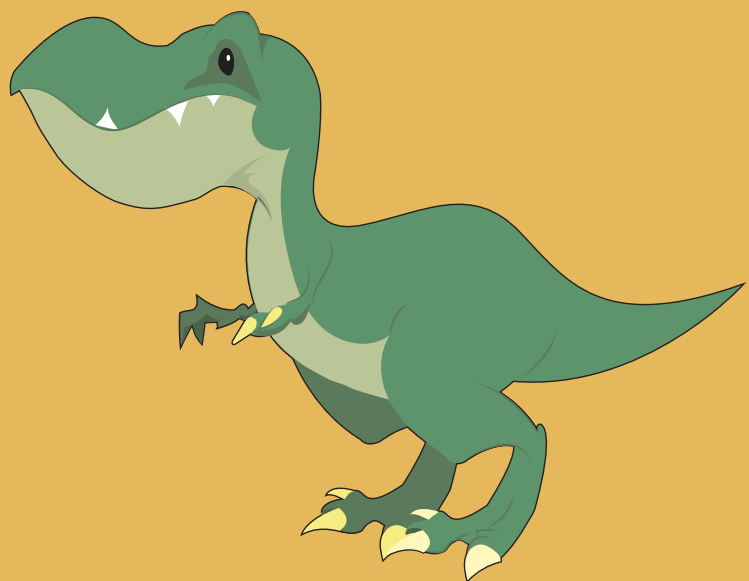
Tyrannosaurus Rex was the size of a modern-day bus. It had a large head with strong, sharp teeth. It had a long tail which helped it to balance on its back legs. The arms of the T-Rex were quite small, ending in hands with only two fingers.

Tyrannosaurus Rex was a carnivore, which means it was a meat-eating dinosaur. T-Rex gripped its food with its giant, clawed feet. It also ripped flesh apart with its strong jaws. Scientists think that the tyrannosaurus rex may also have stolen food from smaller dinosaurs.

Tyrannosaurus Rex walked upright on its two back legs. Scientists can only guess how fast it moved, based on footprints and tracks which are millions and millions of years old.

Their best estimate is somewhere between 17-40 km/h (11-43 m/h).

Tyrannosaurus Rex was one of the most dangerous and ferocious dinosaurs of all time. No wonder scientists are fascinated by these amazing creatures!



Name: \_\_\_\_\_

Date: \_\_\_\_\_

# Tyrannosaurus Rex – Sequencing Task

Cut out the sentences from the table below.

Glue the text in the correct order on the next page.

It lived around 66 million years ago in North America.

Scientists continue to be fascinated by these amazing creatures.

Tyrannosaurus Rex was the size of a modern-day bus.

It gripped its food with its feet and ripped flesh apart with its jaws.

The T-Rex was one of the largest dinosaurs that ever walked the earth.

T-Rex was one of the most dangerous dinosaurs of all time.

Tyrannosaurus Rex walked upright on its two back legs.

Tyrannosaurus Rex was a meat-eating dinosaur.

It travelled at a speed somewhere between 17-40 km/h (11-43 m/h).

It had a large head, a long tail, strong back legs and small arms.

Name: \_\_\_\_\_

Date: \_\_\_\_\_

## Tyrannosaurus Rex – Sequencing Task

<b>Classification</b> (introduces the topic)	
<b>Description</b> (what it looks like)	
<b>Description</b> (what it eats)	
<b>Description</b> (how it moves)	
<b>Conclusion</b> (sums up the topic)	

# Tyrannosaurus Rex – Answers

<b>Classification</b> (introduces the topic)	The T-Rex was one of the largest dinosaurs that ever walked the earth. It lived around 66 million years ago in North America.
<b>Description</b> (what it looks like)	Tyrannosaurus Rex was the size of a modern-day bus. It had a large head, a long tail, strong back legs and small arms.
<b>Description</b> (what it eats)	Tyrannosaurus Rex was a meat-eating dinosaur. It gripped its food with its feet and ripped flesh apart with its jaws.
<b>Description</b> (how it moves)	Tyrannosaurus Rex walked upright on its two back legs. It travelled at a speed somewhere between 17-40 km/h (11-43 m/h).
<b>Conclusion</b> (sums up the topic)	T-Rex was one of the most dangerous dinosaurs of all time. Scientists continue to be fascinated by these amazing creatures.